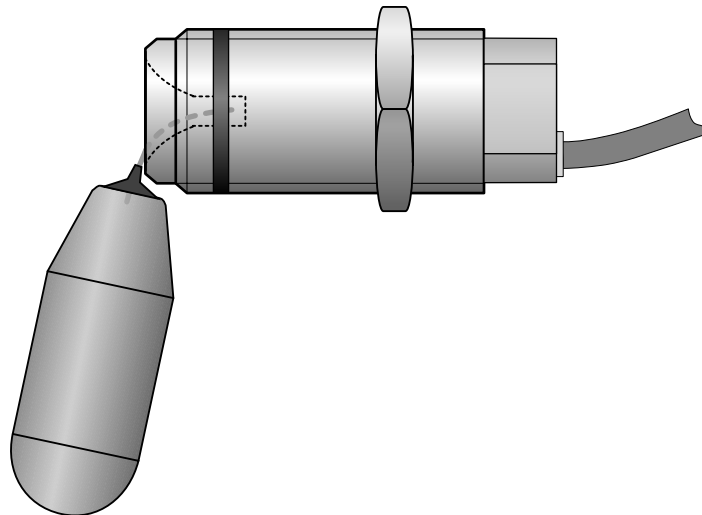


Suspended Float Switch

miniature version

for faeces and extremely dirty liquids



PSS 8

KROMA
FÜLLSTANDSMESSTECHNIK GmbH
Rostocker Straße 9-10 D-39124 Magdeburg
Telefon: +49(0)391/2538744 Fax: +49(0)391/2538745
E-Mail: info@KROMA.eu Internet: www.KROMA.eu

PSS 8 Miniature Suspended Float Switch

Description

KROMA PSS 8 suspended float switches are designed to monitor levels of extremely dirty liquids in nonmagnetic tanks (e.g. of stainless steel or plastics).

A plastic float on a 1/2" screw plug made of chromium-plated brass is suspended on the end of a stainless steel cord. Float and cord are inserted in the tank through a 1/2" screw socket. As the float rises with the level of the liquid, the switching operation starts. A permanent magnet inside the float actuates a magnetic switching contact in the 1/2" screw plug. The PSS 8 is furnished with a simple undelayed contact. Switching points are provided perpendicularly ±10 mm from the centre line of the 1/2" screw plug. A seal made of special plastics protects the 1/2" screw plug against the thread of the 1/2" welding sleeve. Thus, additional sealing material is not required when installing the instrument for the first time.

Special Features

- No jamming of the freely movable float - suited for extremely dirty liquids
- Easy installation - magnetic sensor inside the 1/2" screw plug
- No additional sealing material
- Integral cable (standard length 0.5m, halogen-free, flame retardant) - watertight
- No power supply required
- Simple electrically isolated make contact, break contact or change-over contact (not short circuit-proof)
- Electrical functional testing with actuating magnets from outside possible
- Tested according to German railways' standard BN 411002/EN50155 (approved for use on rail vehicles)

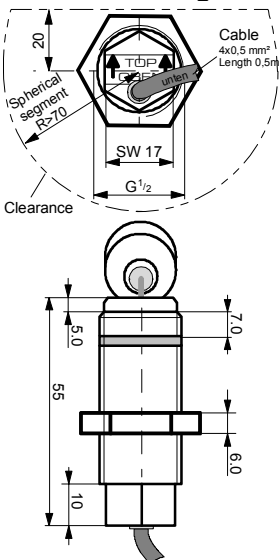
Technical Data

| | |
|---------------------------|--|
| Output : | Make contact, break contact, change-over contact max. 35 V, 0.2 A, 3 VA/W |
| Switching point: | ±10 mm (Refer to outline drawing) |
| Mounting: | 1/2" screw plug, self-sealing, with seal made of special plastics |
| Electrical connection: | Traction cable Radox GKW 4x0.5mm ² , Ø 4.7mm, halogen-free, flame retardant |
| Distance PSS 8 to PSS 8: | > 60 mm |
| Liquid temperature range: | -40°C to 70°C |
| Storage temperature: | -55°C to 70°C |
| Operating pressure: | ≤ 110 kPa (1.1 bar) |
| Liquid density: | ≥ 800 kg/m ³ |
| Testing: | As per EN 50155 (BN 411002) |
| Degree of protection: | IP 65 |
| Weight: | Approx. 0.150 kg |
| Vibratory strength: | 7.9 m/s ² (5 to 150 Hz) |
| Shock resistance: | 50 m/s ² |

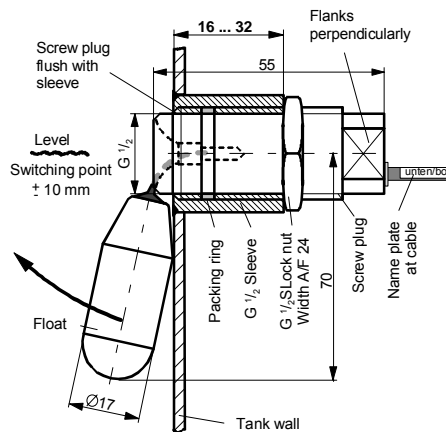
Information required with order

| | |
|---|------------------------|
| KROMA PSS 7 suspended float switch | PSS 8 . 2 - 0,5 |
| Type of contact „1“ = break contact for rising levels | |
| „2“ = make contact for rising levels | |
| „3“ = change-over contact for rising levels | |
| Connection „0.5“ = cable 4x0.5mm ² | |
| standard length 0.5m (other length on request) | |

Outline Drawing

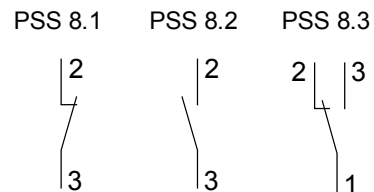


Mounting



The G 1/2 welding sleeve is not included in the scope of delivery!

Terminal Assignment



Subject to technical modifications!