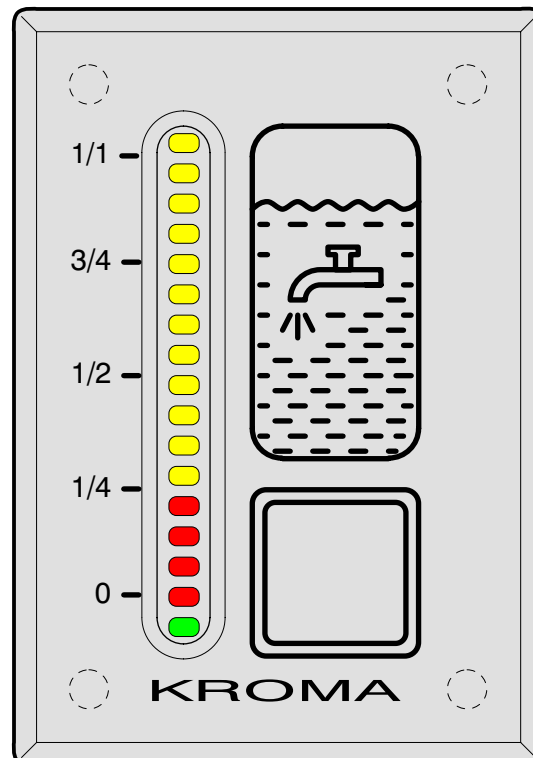


# Level Indicator



## BAZ 13

**KROMA**  
**FÜLLSTANDSMESSTECHNIK GmbH**  
Rostocker Straße 9-10 D-39124 Magdeburg  
Telefon: +49(0)391/2538744 Fax: +49(0)391/2538745  
E-Mail: [info@KROMA.eu](mailto:info@KROMA.eu) Internet: [www.KROMA.eu](http://www.KROMA.eu)

# BAZ 13 Level Indicator

## Description

KROMA BAZ 13 level indicators serve to display liquid levels by means of a resistor-type sensor (e. g. KROMA MWA). Sixteen extra bright light-emitting diodes being arranged as a luminous band guarantee high accuracy of resolution and exact reading both in the dark and in sunshine. By shortly pressing the piezoelectric pushbutton, the BAZ 13 is switched on and off. The instrument automatically switches off after an on-time (0 to 16 minutes) which is variably programmable by the manufacturer. On-time is signalled by a green light-emitting diode, even if the tank is empty. In addition, models are available with the level indicator being arranged behind a hinged cover. On these models, the BAZ 13 will be actuated by an integral magnetic switch while opening the hinged cover.

The rugged stainless steel housing provides a proper seal to the exterior wall of a vehicle. The BAZ 13 is suited for both front mounting and rear mounting. For the latter, screw bolts welded to the BAZ 13 ensure that screws are not visible from the front side. Stainless steel housing, encapsulated electronics as well as piezoelectric pushbuttons or magnetic switches provide optimal protection against rough ambient conditions and vandalism.

**The advanced BAZ 13 and its predecessor, the BAZ 3, are interchangeable without any problems.**

## Special Features

- Extended operating voltage range (16 to 60 V DC)
- Good visible, extra bright LED band with high accuracy of resolution (16 LEDs)
- Resistance or tank characteristics programmable by the manufacturer\*
- Programmable on-time (0 to 960 sec., standard 15 sec.\*)
- Integral piezoelectric pushbutton with ON/OFF function or magnetic switch
- Stainless steel housing for rough ambient conditions, suited for both front and rear mounting
- Tested according to German railways' standard BN 411002/EN 50155 (approved for use on rail vehicles)

## Technical Data

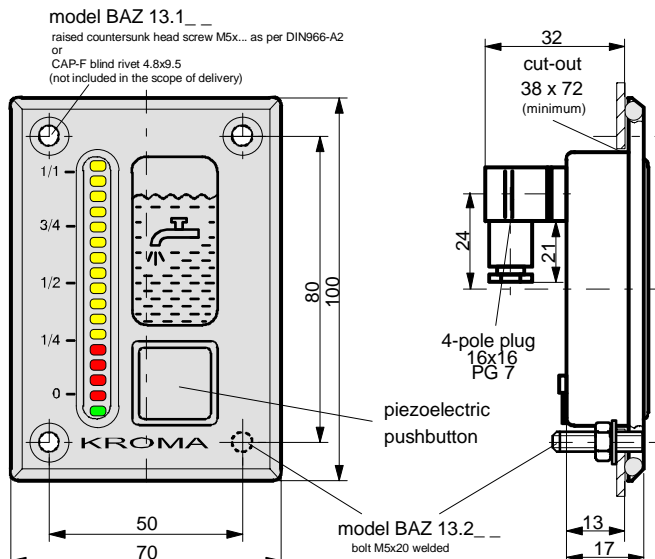
Operating voltage:	24V DC (16V to 60V)
Power consumption:	approx. 2VA
Static current:	< 0.1 mA
Input resistance MWA:	2 kOhm to 10 kOhm
Degree of protection:	IP 65
Ambient temperature range:	-25°C to +70°C; (-50°C to +70°C*)
Storage temperature range:	-55°C to +70°C
Vibratory strength:	5.9 m/s <sup>2</sup> (5 to 150 Hz)
Shock resistance:	50 m/s <sup>2</sup>
Weight:	0.150 kg
Cut-out:	38 <sup>+3</sup> x 72 <sup>+3</sup> mm
Mounting bores:	∅5.5 mm; distance 50 <sup>±0.3</sup> x 80 <sup>±0.3</sup> mm

## Information required with order

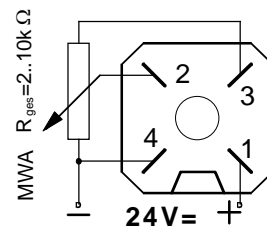
KROMA **BAZ 13** level indicator \_\_\_\_\_ **BAZ 13 . 1 2 0**  
 Mounting: "1" = from front; "2" = from rear \_\_\_\_\_  
 Operation: "0" = without switch; "1" = magnetic switch; "2" = piezoelectric pushbutton (standard on-time 15 sec.\*) \_\_\_\_\_  
 Front panel "0" = water; "1" to "9" = customized\* \_\_\_\_\_

\* special design to be requested from KROMA

## Outline Drawing



## Terminal Assignment



### Key to wire colours of furnished cable :

- 1 - WHITE (+24V)
- 2 - BROWN (MWA slider)
- 3 - YELLOW (MWA supply)
- 4 - GREEN (0V; - MWA)

Subject to technical modifications.